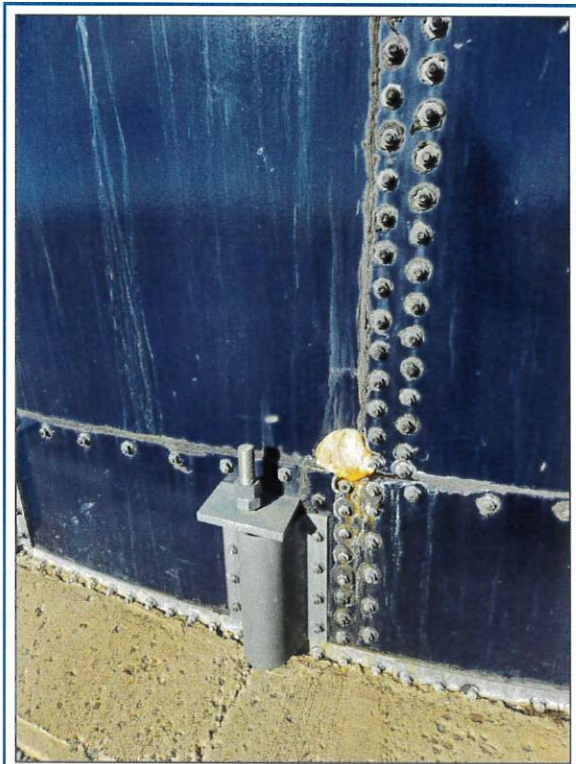
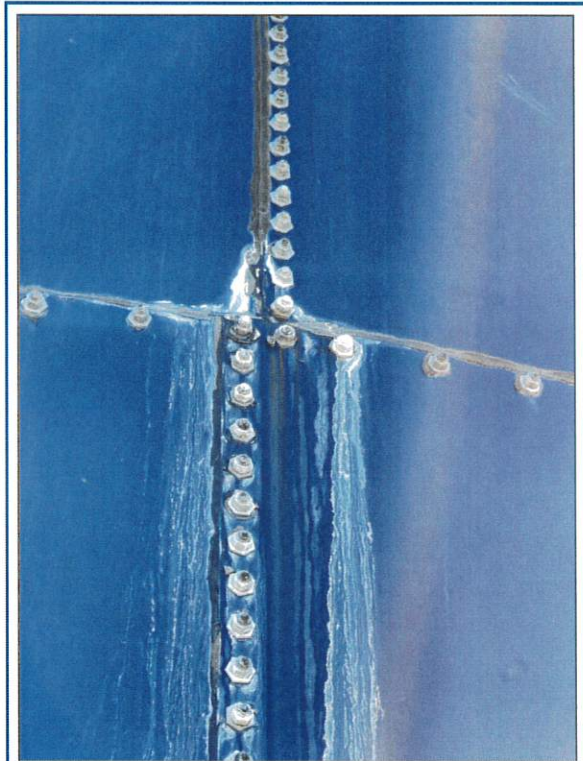




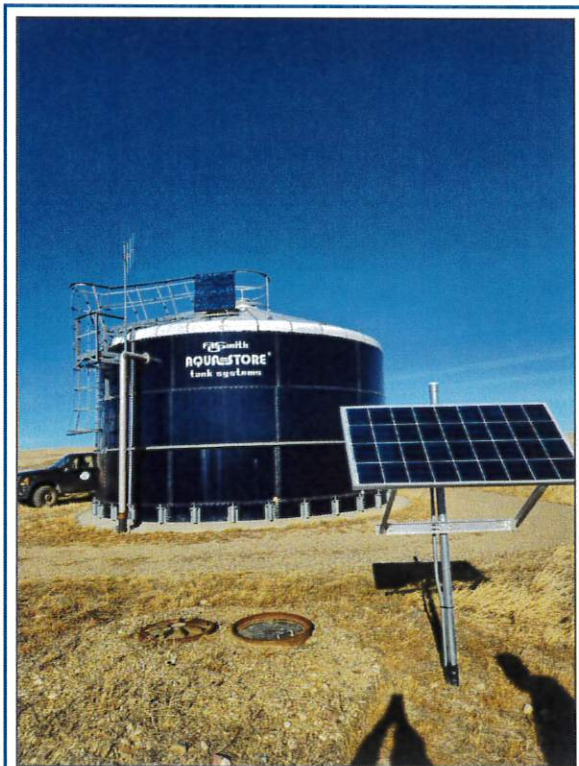
Sun Prairie Village County Water and Sewer District **GROUND SURFACE RESERVOIR**



Leak at Joint
Near Base



Leak at Joints
Halfway Up Tank Wall



Ground Surface Reservoir
North of Village

GROUND SURFACE RESERVOIR
Capacity: 90,000 gallons
Type: Bolted, Glass-Lined, Steel Tank
Construction: 1994

Sun Prairie Village County Water and Sewer District
Water Preliminary Engineering Report
Open House April 16, 2024





SEMI BURIED RESERVOIR



Roof Support Column Submerged



Roof Support Column at Roof Beam



Roof Support Column at Tank Floor

RESERVOIR INSPECTION CONDITION SUPPLEMENTAL:

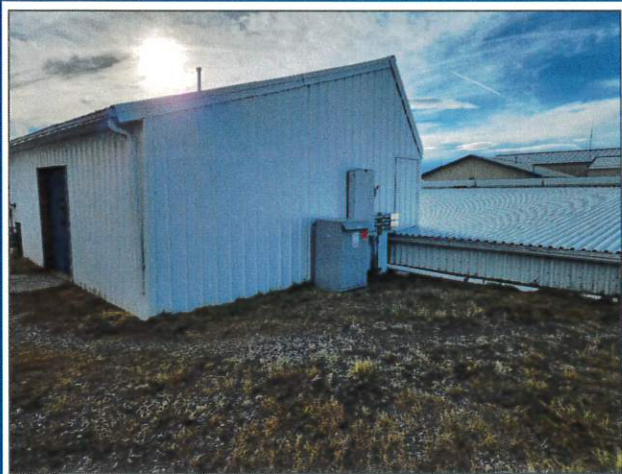
"The diver does highly recommend replacement of all four columns as the corrosion is expanding throughout the roof supports"

Sun Prairie Village County Water and Sewer District
Water Preliminary Engineering Report
Open House April 16, 2024



Sun Prairie Village County Water and Sewer District

PUMP STATION



Pump Station Building



Pump Station Interior



Pump Station Interior

PUMP STATION

4 Centrifugal Pumps
Construction 1976/1977
Adjacent to Semi-Buried Reservoir

Sun Prairie Village County Water and Sewer District
Water Preliminary Engineering Report
Open House April 16, 2024



engineers • surveyors • planners • scientists



Sun Prairie Village County Water and Sewer District

SEMI BURIED RESERVOIR



Roof Support System



Roof Support System



Roof Support System



Roof Support Beams



Semi Buried Reservoir

SEMI BURIED RESERVOIR

Capacity: 400,000 gallons

Type: Concrete with Steel Roof

Construction: 1976/1977

1993 Roof Replacement

Sun Prairie Village County Water and Sewer District
Water Preliminary Engineering Report
Open House April 16, 2024



engineers • surveyors • planners • scientists



POTENTIAL PROJECTS

A. Repair Both Reservoirs

1. Semi-Buried Reservoir
 - Replace roof support columns
 - Reinforce certain roof support members
 - Coat steel
 - Repair cracks in concrete
 - Place screen mesh over roof/wall gap
2. Ground Surface Reservoir
 - Repair leaks
 - Reseal bolted joints/seams
 - Add cathodic protection

Total Project Cost Estimate = \$1,026,000

B. Replace Pump Station and Add Well Fencing

1. Replace existing pump station with premanufactured pump station
2. Install chain link fence enclosure around four wells in County park

Total Project Cost Estimate = \$1,212,000

C. Both A and B Above

Total Project Cost Estimate = \$2,238,000



Sun Prairie Village County Water and Sewer District

POTENTIAL FUNDING SCENARIOS - DEBT SERVICE

Funding Scenario 1:

- 100% SRF Loan @ 2.5% for 20 Years (SRF - State Revolving Fund)

	Annual Payment	Monthly Payment	125% Coverage	User Rate Increase
A. Repair Both Reservoirs	\$65,820	\$5,485	\$6,856	\$12.82/month
B. New Pump Station & Well Fencing	\$77,752	\$6,476	\$8,099	\$15.14/month
C. All Updates (Both A and B)	\$143,572	\$11,964	\$14,955	\$27.95/month

Funding Scenario 2:

- \$500,000 MCEP Grant (MCEP - Montana Coal Endowment Program)
- \$125,000 RRGL Grant (RRGL - DNRC Renewable Resource Grant and Loan)
- 30% USDA RD Grant (RD - Rural Development)
- 70% USDA RD Loan @ 2.75% for 40 Years

	Annual Payment	Monthly Payment	125% Coverage	User Rate Increase
A. Repair Both Reservoirs	\$11,658	\$972	\$1,214	\$2.27/month
B. New Pump Station & Well Fencing	\$17,065	\$1,422	\$1,778	\$3.32/month
C. All Updates (Both A and B)	\$46,893	\$3,908	\$4,885	\$9.13/month